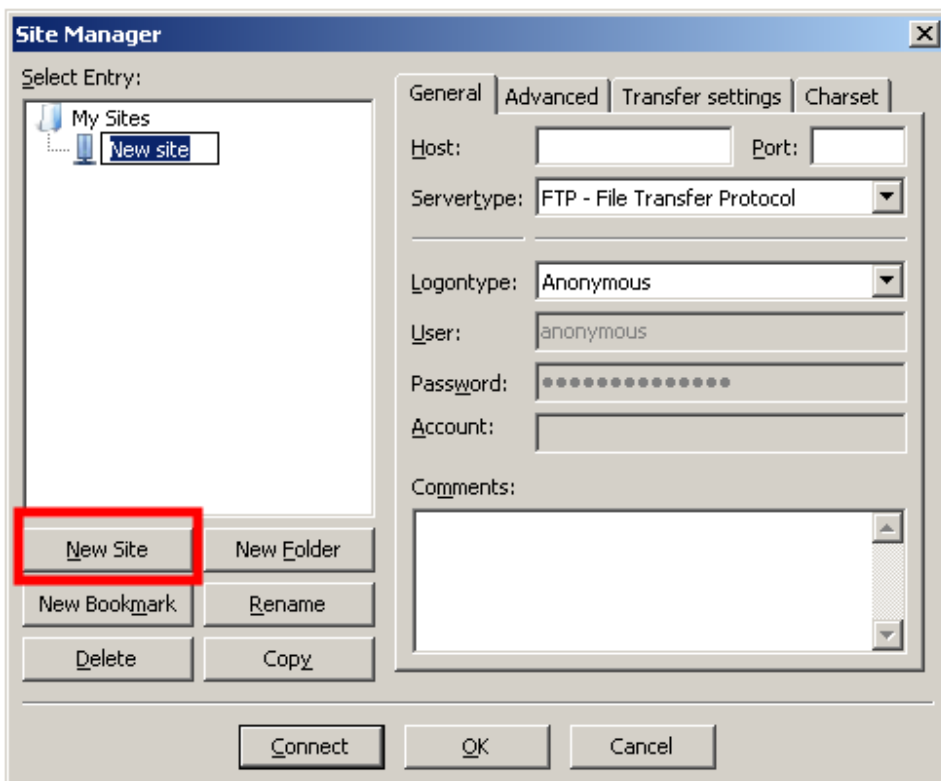
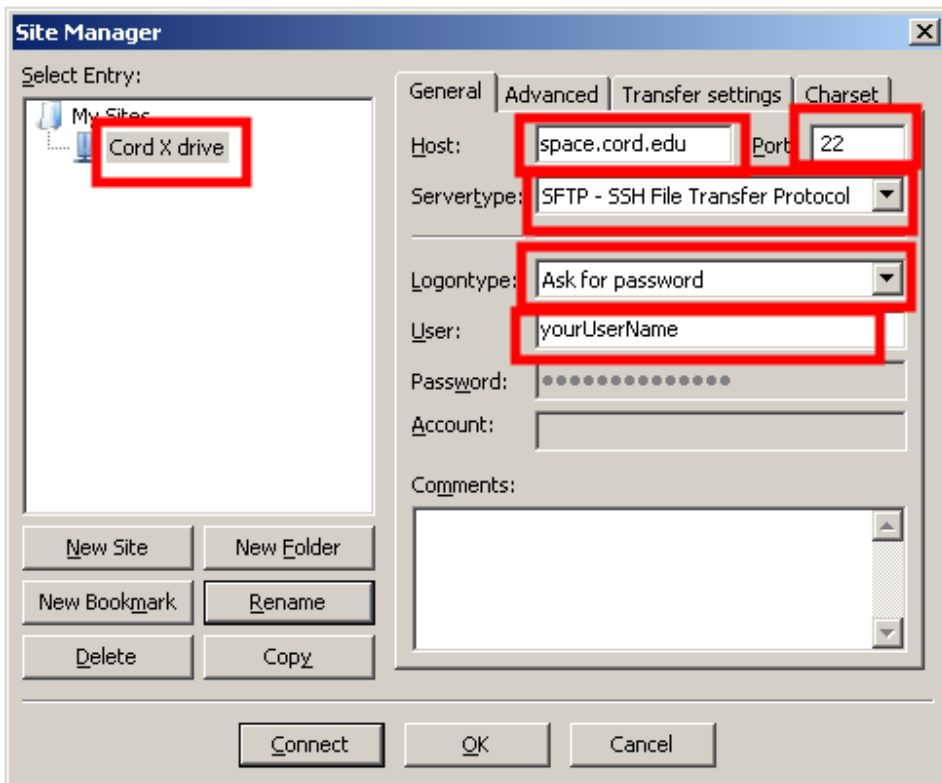


The first time through, you'll need to set up FileZilla to access you Cord.edu X drive.

Open up the Site Manager as shown to the left.



In the site manager, select New site as shown to the left.



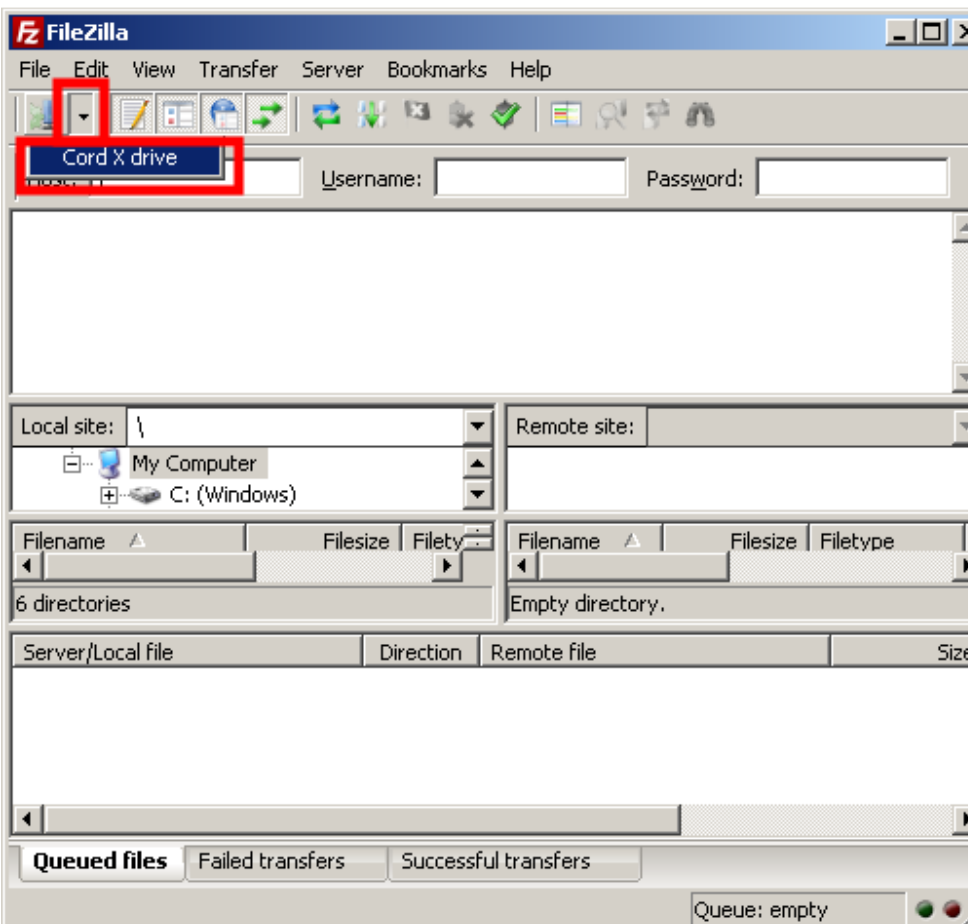
Rename the site to something like Cord X Drive. Change the following fields as indicated on the left:

Host, Port

Srvtype

Logontype

User -- Make sure the you use your actual user name (same one you use to log into Moodle). Once done, click OK.



Now that the setup is complete, you can access your X drive from the SiteManager drop down menu. You will be asked for your password & then connected to your drive.