

CS 125 – Getting set up with Java: a quick guide to setting up Java development on your own computer.

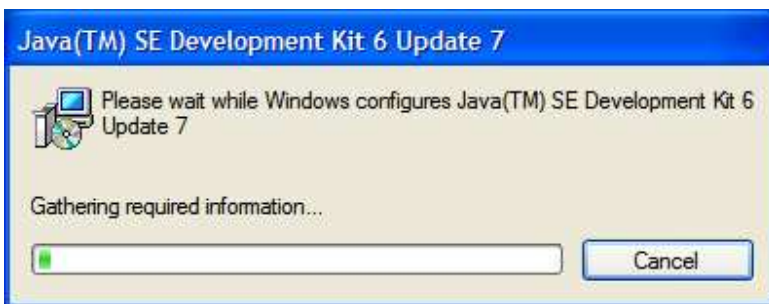
The naming conventions for Java have been changed several times over the language's history. We'll be using what is currently referred to as Java SE. "SE" is used to distinguish the base platform from Java EE and Java ME. Java EE aka Enterprise Edition includes all of the classes in Java SE, plus additional classes for writing programs which run on servers as opposed to workstations. Java ME aka Micro Edition is a version intended to provide Java APIs for the development of programs for small, resource-constrained devices such as cell phones, PDAs and the like.

Presently, the most current stable version of Java SE is JDK 6 Update 7. There is an Update 10, but it is in beta. The Java SE Development Kit (JDK) includes the Java Runtime Environment (JRE) and command-line development tools that are useful for developing applets and applications. To get it, go to:

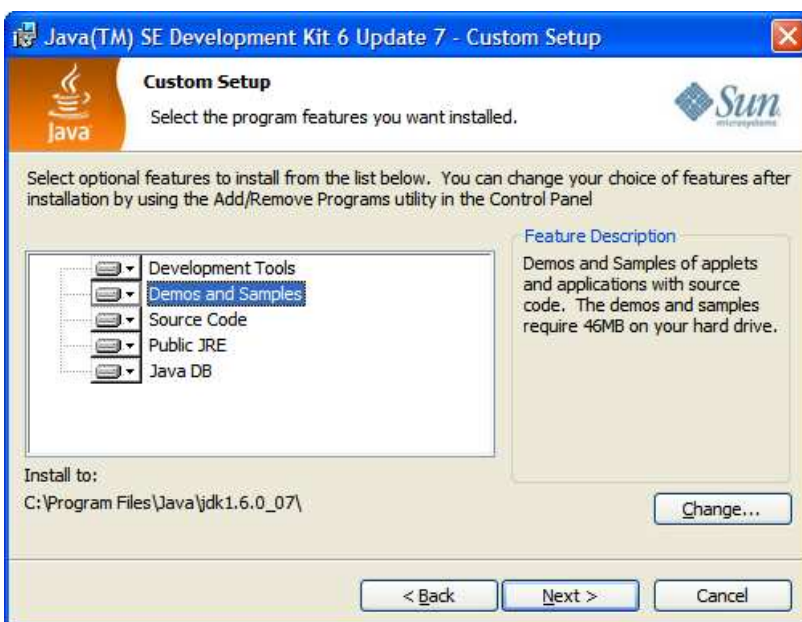
<http://java.sun.com/javase/6/download.jsp>

Locate the **JDK 6 Update 7** section & click the **download** button. Next, you'll need to select your platform. The **x64** options are for the 64 bit versions of the given OSes. Chances are you have the regular version, so for a regular Windows install, you'll want **Windows** and not **Windows x64**.

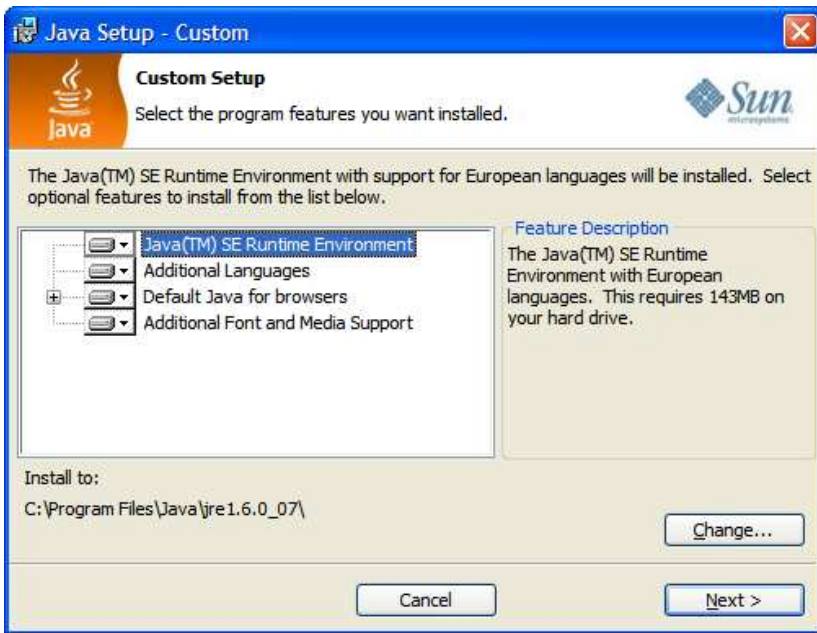
Next, you'll need to select either the online or offline version as well as the download method. I recommend selecting the online installation & saving the file directly (by right clicking & selecting **Save as**) rather than using the **Download Selected with Sun Download Manager** button.



Once you have the installation application, run it. The first part of the installation might take a while; you'll just have to wait it out.



Next, you'll come to a screen like the one on the left; I strongly recommend leaving any installation options on their default settings.

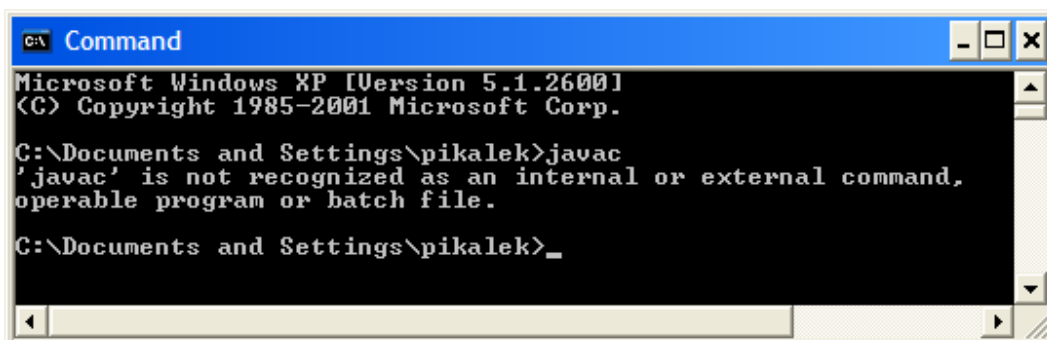


After a couple more screens, you'll come to another screen setup screen like the one on the left; once again, I strongly recommend leaving any installation options on their default settings.

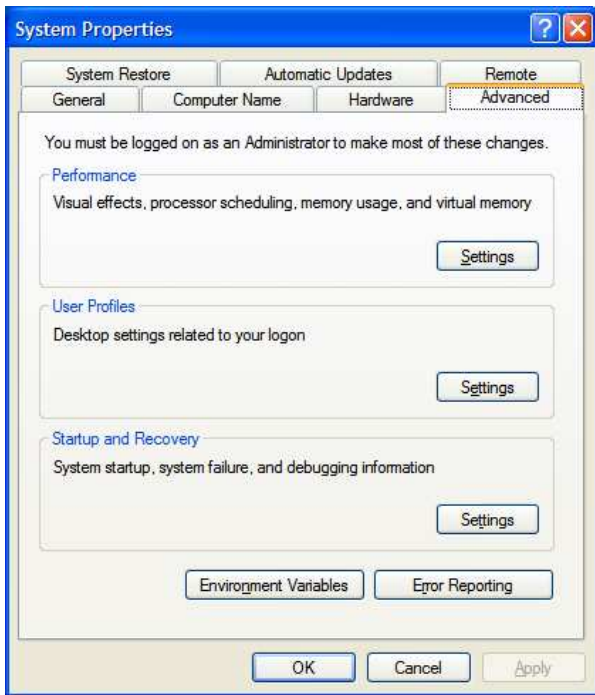


Success! Click **Finish** & you'll be done with this part (the registration web page, if it comes up, is optional).

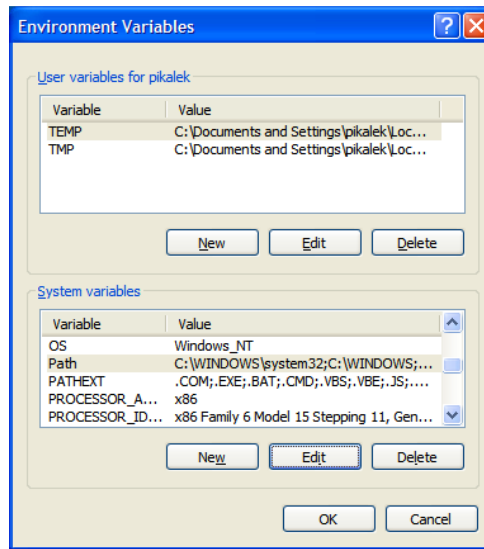
Next, we'll check the install. Fire up a command prompt & try to execute the command **javac** (as seen below):



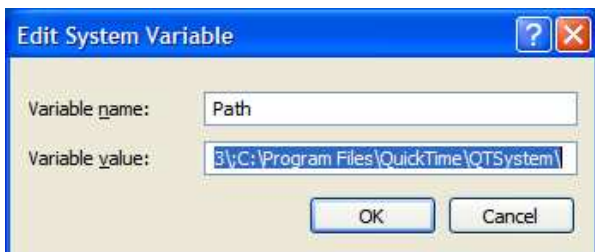
Hmmm, not quite what we want. If you get something like the result on the left, you'll need to update your path information.



Go to your **System Properties** (accessible by right clicking **My Computer**) and open the **Advanced** tab (seen on the left) & click **Environment Variables** to bring up the window shown below:



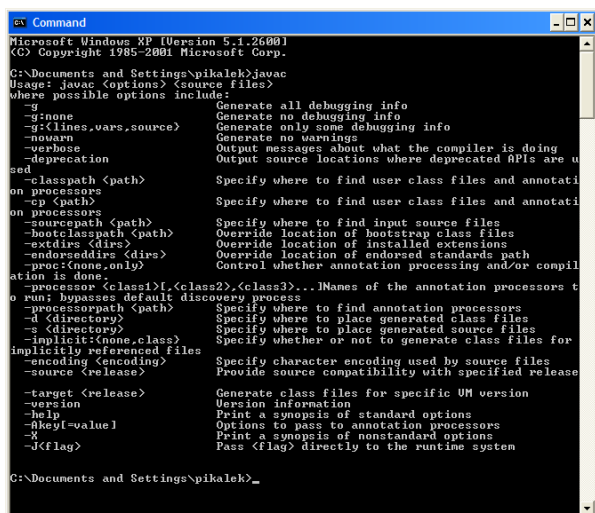
Scroll down in the **System variables** panel, locate **path** and click **Edit**. This should bring up the window below



If you've used the default installation settings, add:

;C:\Program Files\Java\jdk1.6.0_07\bin

to the end of the **Variable value**. Don't forget the semicolon & make sure you don't accidentally completely overwrite the current contents of the **Variable value** field.



Open a new command window & try to execute the command **javac** again. It might take a couple of seconds, but you should get a long response explaining all the command line options for **javac**, similar to the one shown on the left.

If not, or if you want additional information on the installation process and updating path variables, refer to:

<http://java.sun.com/javase/6/webnotes/install/jdk/install-windows.html#Environment>



Note: Java may occasionally try to update itself as shown to the left. It's important to keep Java up to date. If you have an out of date version with a security flaw, it's very possible for malicious web pages to exploit the problem & compromise your system. For more information on configuring Java's

autoupdates, refer to: http://www.java.com/en/download/help/java_update.xml

Next, you will probably want to install BlueJ, the IDE we will be using in class. To get it, go to:

<http://www.bluej.org/>

Click the **Download** link, and then click the link that corresponds to your OS. Once you have the installation application, run it; once again, I recommend leaving any installation options on their default settings.

The first time you run BlueJ, it will likely ask you to select the virtual machine (VM) you want it to use. The standard Java VM should appear as an option – select that and you should be good to go.