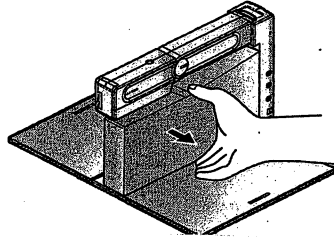
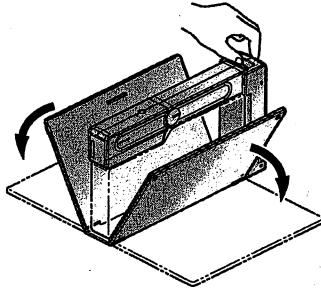


Setting Up

- 1** Slide the stage open lever at the top of the main unit.
The stage is unlocked and unfolded to the right and left.



- When the accessory case is housed inside, be careful not to drop it.



② - Go to 3

Note: If unit quits operating, turn power switch off and then turn power back on.

Note:

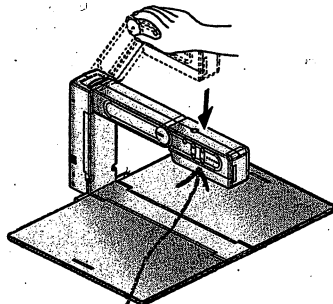
■ Changing the size of an object (Manual Zoom)

By pushing the camera head up/down, the object in display on the monitor screen can be zoomed in/out.

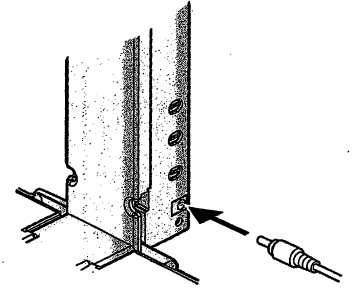
- Pushing the camera head down: To enlarge the object.
- Pushing the camera head up: To minify the object.

To enlarge the object in display on the monitor screen even larger than when the camera head is in the lowest horizontal position (object enlarged at the highest level), use the digital zoom functions (refer to page 21).

← Q and + buttons



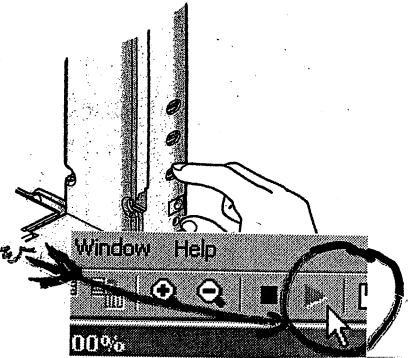
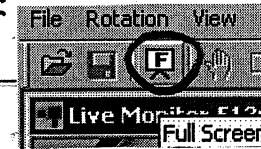
- 3** Connect the DC plug of AC adapter to the power terminal [DC IN 12V].



3.5 Plug in USB cord into classroom computer

- 4** Turn [I/O] (Power Switch) ON.
The status display LED lights in green, and the image is displayed

4.5 Click
4.6 Click right start arrow
4.7 Click F



- The image may be affected by unsightly shadows caused from other lights in the room or from the outside. This effect can usually be eliminated or reduced by repositioning this product being mindful of the ambient lights or by turning around it.

Note: The lamp may improve the image

Turning the lamp ON / OFF

- Set the [☀] switch to [ON].
The illumination lamp lights.



- Do not look into the illumination lamp.
- Do not touch the illumination lamp while it is ON. Its temperature may be higher.

